

McLENNAN COUNTY ELECTRIC COOPERATIVE

Your Touchstone Energy® Cooperative 

P.O. Box 357 • McGregor, TX 76657 • www.mclennanelectric.com • (254) 840-2871

Member Information



Have You Heard?

Annual Meeting, October 21, 2003

McLennan County Electric Cooperative will hold its annual meeting on October 21, 2003, at 7:30 p.m. at McGregor High School. Many activities are planned, including child identification, health facts and energy ideas. Door prizes will also be given away. Make your plans to attend.

**The Nominating Committee
of the Annual Membership
Meeting will meet
September 16.**

New Office Construction Update

The plans for the new MCEC office have been finalized and construction has begun. The board of directors of MCEC accepted a bid from Kenneth Brown Construction of Gatesville to build the facility. A groundbreaking ceremony was held on July 23, 2003, at the new site with local community leaders and news media present. As construction continues, more news will follow. The new building will be located at 1111 S. Johnson Drive in McGregor.



Meter Base Guidelines

Enclosed meter bases pose a special problem for our service employees. These are meter installations that have been enclosed by an addition to the home or the building of an enclosure that prevents our access to the meter. It makes it difficult for us to get to the meter to read it or check connections, and could pose a fire hazard. Precious time is wasted when we cannot get to the meter to cut the power in case of a fire. When we find installations of this kind, we may ask you to move the meter to a safe location outside the enclosure. The expense will be borne by the member to alleviate the problem. We will work with our members to make sure they locate the meter properly. Only approved electrical equipment should be used. A qualified electrician can help with the selection of equipment to make your home safe.



Gate Problem

Problems arise when we are unable to restore your power because of a locked gate. We normally ask our members if we can add our lock so we can expedite service restoration and take care of problems when they arise. You can call the office at 840-2871 to give us permission to install a lock in your gate. We will close and lock gates when we leave. Protecting your trust, your

“Home Team Advantage.”



**McLennan County
Electric Cooperative, Inc.**

101 N. Main St., P.O. Box 357
McGregor, TX 76657
(254) 840-2871 or 1-800-840-2957

Your Touchstone Energy® Cooperative 

McGregor Founder's Day Celebration

The 12th annual Founder's Day festivities begin on September 13, 2003, with the Hometown Talent Show tryouts and resume on Saturday, September 20. The annual Founder's Day 5K Race will be held on September 20, kicking off the many festivities—the parade will follow. Music, food, drink, arts and crafts are just a few of the things available.



tractions with family atmosphere. There will also be games and activities for the kids, including rides, slides, duck pond, petting zoo and fun for all those young at heart.

As the day draws to a close, there is a street dance planned for those who are still light on their feet. It will be a time where all can sit, shake a leg to the music, or just enjoy the evening



the annual lawnmower race. Plans this year include all of the above, with a pie-eating contest and ugly cake contest added. If you just want to sit and watch, you can do that also.

The women's area includes doll show, arts and crafts booths, along with several at-



The Festival is divided into "areas." The men's area was added last year to cater to men and dads. Exhibits included new boats and automobiles, antique engines, fishing displays and

Bet you didn't know...

- Most lipstick contains fish scales!
- Peanuts are one of the ingredients of dynamite!
- When Heinz ketchup leaves the bottle, it travels at a rate of 25 miles per year!



Member Photo

This month's photo is of Shelly Stratton Allinson, daughter of Jack and Lynn Allinson of Crawford. Pictured with her trike and jar of bugs, Shelly is ready to face the world. We need photos of your children or grandchildren or any other interesting subject to place in our magazine. Send these photos to the office or e-mail them to mike@mclennanelectric.com



**McLennan County
Electric Cooperative, Inc.**

101 N. Main St., P.O. Box 357
McGregor, TX 76657
(254) 840-2871 or 1-800-840-2957

Your Touchstone Energy® Cooperative 

**The MCEC office will be closed
Monday, September 1.
Have a safe and enjoyable holiday.**

Our Favorite Places

Listed here are some of our favorite places; these may be yours, too.



Best Place to Spend a Saturday Evening:
The Grove



Best Sunday Afternoon Drive:
Mother Neff



Belton



Gatesville

Favorite Court Houses:
Coryelle and Bell County

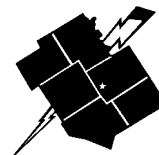
Favorite Golf Course in Central Texas:



Hwy. 84 and Speegville Road,
Waco



Keeping Your Trust.
Your Home Team Advantage



McLennan County Electric Cooperative, Inc.

101 N. Main St., P.O. Box 357
McGregor, TX 76657
(254) 840-2871 or 1-800-840-2957

Your Touchstone Energy® Cooperative 

Service:
 Something we have
 been providing
 since 1937

Being your
Home Team
Advantage
 is important to us!

McLennan County
 Electric Cooperative

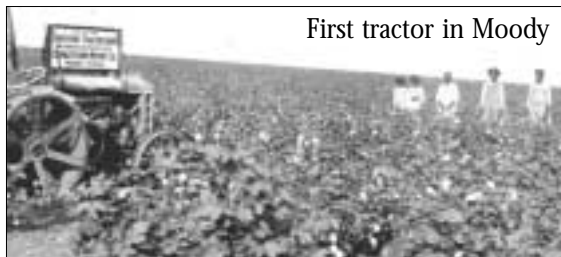
Your Touchstone Energy® Cooperative 



Community Spotlight

Moody, Texas

Moody was established in 1881. When the Gulf, Colorado and Santa Fe railroads laid track, fuel, water and crew stops were built along its route. This was how cities like Moody, Sealy, Somerville, Rosenberg, Kempner, Temple and others were founded and named after prominent Galvestonians. Moody was named after Lt. Colonel



First tractor in Moody

William Louis Moody Sr., who served in the Seventh Texas Infantry during the Civil War. He was born May 19, 1828.

The new city of Moody by the Santa Fe tracks became a booming town with homes, churches, schools, cemeteries, ice plants, blacksmith shops, post office, general stores, newspapers, drug stores and five cotton gins. First owners of Palace Theater were Jim McAuley and Tom Payne. The first newspaper was called *The Monitor*, started in 1881 by E. W. Josh Billings.

Moody now has a substantial business district, eight churches and several residential areas. Mother Neff State Park, Texas' first state park, is seven miles west of the city on the Leon River. Vandiver Gin is the only operating gin in McLennan County. It is owned by Beans Vandiver and run by Bennie Hargrove. The Downs brothers of Temple established the Citizens Bank with capital of \$300 and four bales of cotton. In 1901 the bank was nationalized under the name of First National Bank of Moody, with F.F. Downs as president.



Downtown 1941